



Newborough Primary School

Nature Playspace

SCHEMATIC DESIGN REPORT

May 2022

CONTENTS

Section 1	Project Vision Site Exploration Playspace Brief
.....	
Section 2	Landscape Design Opportunities and Constraints Landscape Concept Plan Next Steps

Four Landscape Studio wish to acknowledge the Traditional Custodians of the land on which we work, live and play, The Whadjuk people. We wish to acknowledge and respect their continuing culture and contribution to the life of this city and region.

PROJECT VISION



PLAY



CELEBRATE
EXISTING TREES



LEVEL TRANSITION

Reinvigorate the existing play space to incorporate a variety of play opportunities to extend and challenge children's play, both physically and socially. The proposed design is to work in with the existing play equipment and layout, enhancing continuous movement by increasing the variety of play through the creation of level changes.

Numerous shade options are provided by the retention of existing trees and the proposal of strategically located planting.



Site area, nearmaps.com

LANDSCAPE CONCEPT
REV A | MAY 2022

SITE EXPLORATION



PLAYSPACE BRIEF

REQUESTED INCLUSIONS

level change
vestibular movement
loose elements for construction
climbing tunnel
durable slide
living tee pee
PROBLEM SOLVING
accessibility sensory
education of local species

SITE CONDITIONS

timber aesthetic
balancing
cubby construction
imaginative play
open to the public

USER PROFILE

5-12 year old students
need for challenge
learning through play
sensory regulation

OPPORTUNITIES

slideelevated play
significant existing shade trees
fence line cubby
develop upper body strength

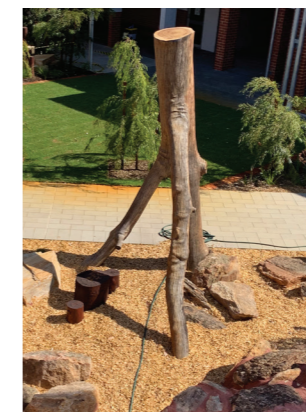
LANDSCAPE CONCEPT
REV A | MAY 2022



THE LANDSCAPE DESIGN

The proposed design seeks to celebrate and enhance the existing play experiences. The following key points are addressed via the design:

- Celebration of existing trees and associated shade
- Retention of existing play equipment
- Enhancing existing obstacle course
- Creation of an entry statement and sense of arrival
- Creation of a sense of enclosure and privacy from the street through the use of planting
- Creation of informal seating spaces for various group sizes
- Creation of play elements that encourage student engagement and team work balance with the creation of quiet spaces for timeout
- Present a soft landscape palette that provides shade, privacy and references the native flora of the area.
- Utilisation of cost-efficient materials, which are sensitive to the school's site and surrounding location, in new and interesting ways.



Precedent imagery

LANDSCAPE CONCEPT
REV A | MAY 2022

OPPORTUNITIES AND CONSTRAINTS

The Newborough Primary School site presents many interesting prospects for the landscape design. Compiled below is a list of the opportunities and constraints that the site provides.

Opportunities:

- Significant existing trees and associated shade
- Existing play equipment to area
- Client desire for stimulating play with calculated risk taking
- Creation of outdoor learning spaces
- Visually screen off views to road and footpath

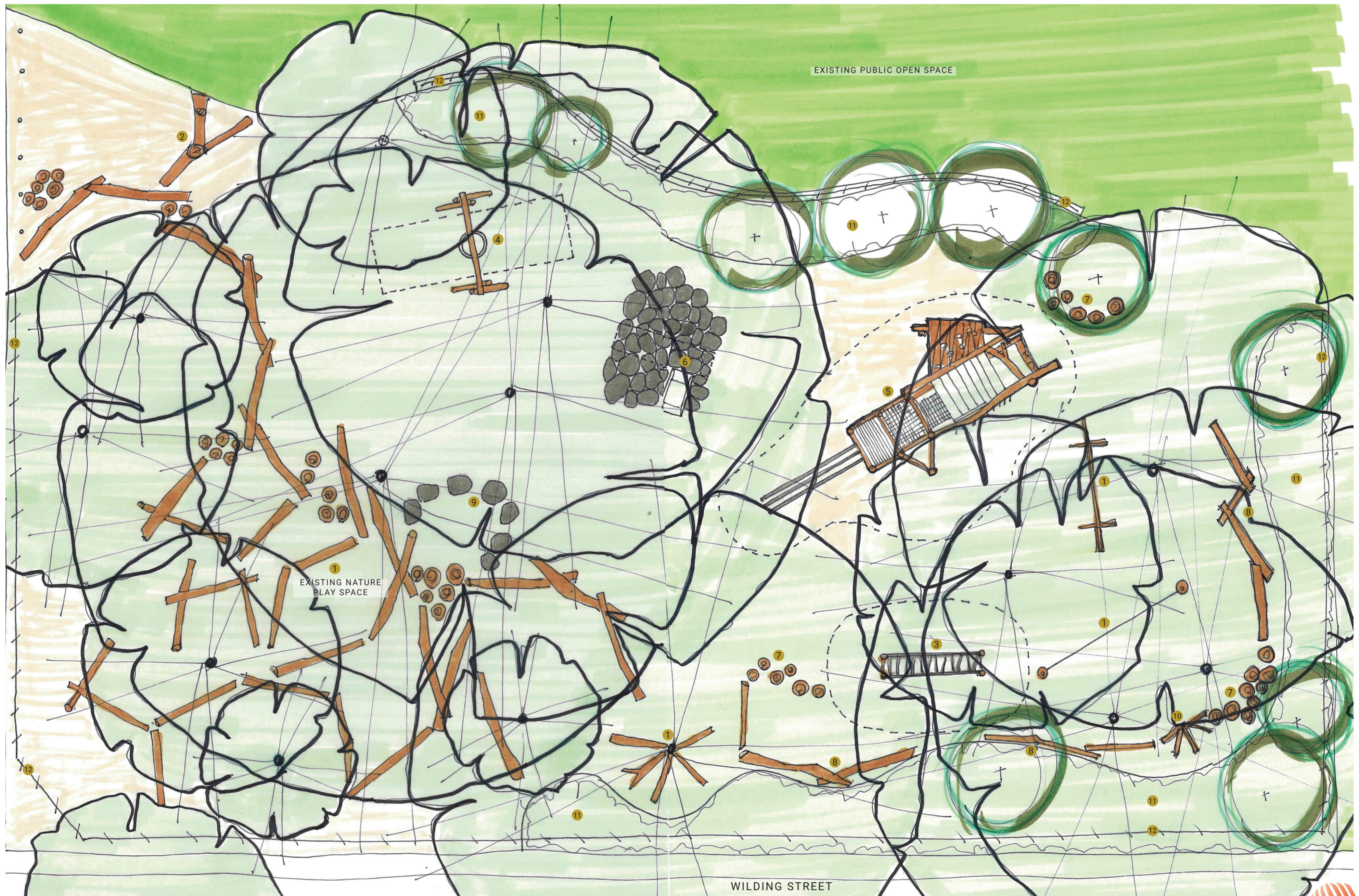
Constraints:

- Limited natural level change
- Close proximity to Wilding Street



View from Wilding Street into playspace

LANDSCAPE CONCEPT
REV A | MAY 2022



LEGEND

- 1 EXISTING EQUIPMENT
- 2 FEATURE TREE ENTRY ARCHWAY
- 3 MONKEY BARS
- 4 A-FRAME BASKET SWING
- 5 STATEMENT CLIMBING TOWER
- 6 ROCK TUNNEL WITH SLIDE
- 7 LOG STEPPERS
- 8 BALANCE LOGS
- 9 YARNING CIRCLE
- 10 CUBBY
- 11 ENDEMIC PLANTING
- 12 EXISTING FENCE LINE



NEWBOROUGH PRIMARY SCHOOL
 NATURE PLAYSACE
 LANDSCAPE CONCEPT PLAN
 SCALE 1:100 @ A1



NEXT STEPS

- 1 SCHOOL FEEDBACK AND REVIEW
- 2 FINALISE DESIGN
- 3 DEVELOPMENT APPLICATION
- 4 CONSTRUCTION DOCUMENTATION
- 5 TENDER VIA PROGRAMMED
- 6 BUILDING LICENCE
- 7 CONSTRUCTION
- 8 PLAY!