



CHURCHLANDS
SENIOR HIGH SCHOOL

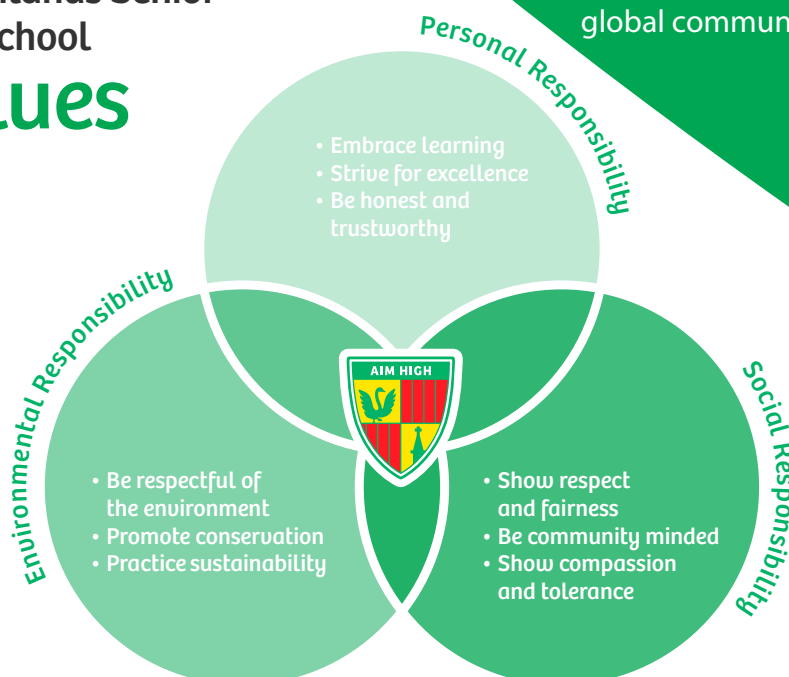


ACADEMIC EXTENSION PROGRAM

Vision Statement

Churchlands aims to develop a school community which encourages personal, social and environmental responsibilities. The school is committed to providing a supportive environment that challenges students to achieve personal excellence and to be active citizens of the local and global community.

Churchlands Senior High School values



Application for entrance into Churchlands' Academic Extension Program

*"We empower every member of our community to be the best person
they can be and
to contribute to the wellbeing of self and others."
School Business Plan 2020-2022*

Community and Wellbeing

By choosing the Churchlands' Academic Extension Program, you and your child will build a stronger connection with our community. Strong ties with community provide all of us with happiness, security, support and a sense of purpose. Being connected to others is important for our wellbeing and enables young people to flourish and learn.

Learning, Challenge and Excellence

Students are challenged through a rigorous, accelerated and differentiated curriculum. There are no limits on student learning experiences and achievement.

Students can tailor their individual programs to combine Academic Extension courses with other options to reflect their wider interests. For instance, Gifted and Talented (GATE) Music, Specialist Swimming, STEM, Community Service and participation in drama and musical productions.

Students access a variety of cross-curricular learning and enrichment experiences such as the AEP Coral Bay Camp, AEP Interdisciplinary Learning Project, Fremantle Talented Young Writers' Workshops and the AEP Mathematics UK/Switzerland Tour.

The school encourages student voice and feedback to continually improve how we create and deliver rich learning experiences.

We have a whole school focus on Gifted and Talented Education, meaning the school is regularly facilitating professional learning for teachers so that their classroom delivery remains at the highest possible level, making use of the latest educational research and innovation.

Care and Support

We continuously monitor the academic achievement and wellbeing of our students.

High-level pastoral care is provided by teachers, AEP Teaching & Learning Coordinator, House Coordinators and Heads of Year.

Two streams – Mathematics and Science / English and Humanities & Social Sciences.

Students may access one or both streams depending on their academic needs.

Test Details

Year 7 2021 selection into the program will be informed by student performance in the Higher Ability Selection Test (HAST). This test is widely used by secondary schools to identify academically gifted students. The program delivers rigorous tests in reading comprehension, mathematical reasoning, abstract reasoning and written expression. It is also designed to measure innate ability and academic potential.

For any further information contact
Churchlands Senior High School
20 Lucca Street
Churchlands WA 6018
Telephone: +61 8 9441 1700
Email: enquiries@churchlands.wa.edu.au

